



# Simplify Your Life



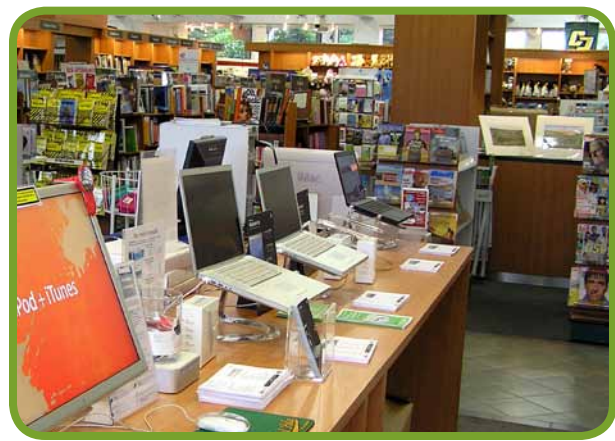
Please fill out the form and mail or bring to Campus Dining Customer Service.

Campus Express Club is the best and most convenient way to make purchases at Cal Poly! When you join Cal Poly as a faculty member, staff employee, or student you are automatically set up as a member. From there you can add value to your PolyCard\* to purchase food, clothing, printing, supplies, and health services.

## Club Benefits

- Add Campus Express Dollars to your PolyCard. It is easier than using cash or checks.
- Receive special discounts and free gifts.
- Campus Express Dollars never expire.
- Adding value online is the quick and easy way to go.
- Security features are in place to protect you.

\*PolyCards are issued to current students, faculty, and staff who have existing relationships to the university.



## How do I add value to my PolyCard?

Adding value takes just a few minutes. When you become a student, faculty, or staff member at Cal Poly you are automatically set up. All you need to do is go online to the Cal Poly Portal (<http://my.calpoly.edu>) and click on the Campus Express Club channel in the Money Matters tab. From there you can deposit funds, check your balance, and view recent activity.

## Other Ways to Add Value

- Go to the Campus Dining website and deposit funds with your credit card.
- Call and speak with a customer service agent.
- Mail a check.
- Visit the Customer Service Office (Bldg. 19) or Cal Poly Corporation Cashier (Bldg. 15).



Today's Date: \_\_\_\_\_

### Personal Information

First Name: \_\_\_\_\_

Last Name: \_\_\_\_\_

Cal Poly Email: \_\_\_\_\_@calpoly.edu

6278561-

(# on your PolyCard, top left, under name)

### Payment Type & Amount

Cash \$ \_\_\_\_\_

Check\* \$ \_\_\_\_\_

Minimum buy in \$5

\* Mail checks or bring to Campus Dining Customer Service (address on back). Do not mail cash.

### Mail Checks To:

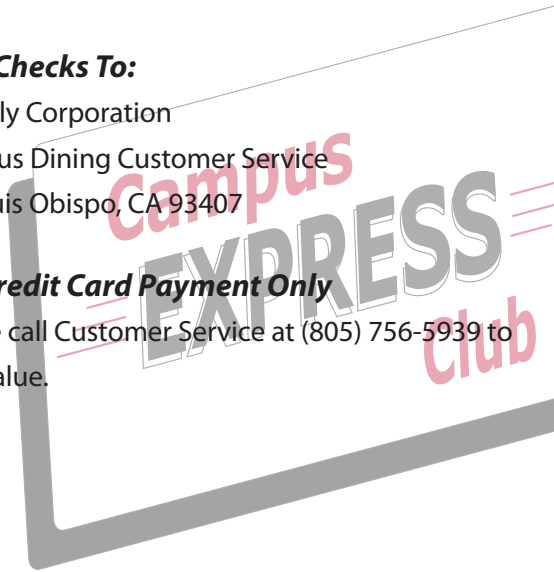
Cal Poly Corporation

Campus Dining Customer Service

San Luis Obispo, CA 93407

### For Credit Card Payment Only

Please call Customer Service at (805) 756-5939 to add value.



# Campus Express Club

*Simplify Your Life*



*Campus Express Club is welcome at:*

- |                       |                         |
|-----------------------|-------------------------|
| BackStage Pizza       | Pony Prints             |
| Baja Surf             | Sage Restaurant         |
| Campus Market         | Sandwich Factory        |
| Einstein Bros. Bagels | Starbucks Coffee        |
| El Corral Bookstore   | Student Health Services |
| Jamba Juice           | Tacos To-Go             |
| Julian's Patisserie   | The Avenue              |
| Lucy's Juice          | The Park                |
| Lucy's Juice Too      | VG Cafe                 |
| Metro 19 station      | Village Market          |
| Peet's Coffee & Tea   |                         |
| PolyCard Printing     |                         |



campus dining  
Cal Poly Corporation  
Campus Dining Customer Service  
San Luis Obispo, CA 933407

campus dining  
[www.calpolycorporation.org/express](http://www.calpolycorporation.org/express)

campus dining  
[www.calpolycorporation.org/express](http://www.calpolycorporation.org/express)  
(805) 756-5939

